

# The Moorings 4800 Crewed

## STANDARD BOAT EQUIPMENT LIST - MOORINGS UPGRADES ON FINAL PAGE\*

### SALOON

Laminate finishes with solid wood trims  
Saloon table  
Settee - U-shape  
Wear resistant simulated wood flooring  
LED overhead lighting  
Ample ventilation through fwd facing portlights  
Stowage space under settee cushions  
2 x *Vetus Magnus 5151* Escape hatches  
under stairways to hulls  
Front doorway access to forward cockpit

### GALLEY

*Corian* galley worktop surfaces  
Single lever mixer faucet  
Double stainless steel sink  
Dish and cutlery drying recess with drainage  
Cover for drying recess  
*Vitrifrigo* 2-drawer front-opening fridge/freezer  
56 gal / 212 L 12v refrigeration  
ENO gas 4-burner stovetop  
ENO gas oven  
Gas solenoid shut-off valve with control at  
switch panel & warning light at cooker  
Gas cylinder regulator in dedicated cockpit LPG locker  
Separate garbage bin locker with side & top access  
Stowage space in shelf lockers  
*Corian* galley shelf with spice rack

### NAVIGATION CONSOLE

Chart table with overhead LED light  
Instrument and switch panel  
Chart table bench seat with stowage under cushion

### CABINS x 4

Laminate finishes with solid wood trims  
Double berths:  
- Fwd Bunks (56 in x 80 in) (1.42 m x 2.05 m)  
- Aft Bunks (59 in x 80 in) (1.50 m x 2.05 m)  
Hanging locker with lower shelf  
Bedside cave locker/table  
LED overhead lighting  
LED reading lamps  
Overhead roller blinds for privacy  
Large open shelves  
Stowage drawers under bunk  
Large hull window incorporating portlight and pleated blind

### HEAD COMPARTMENTS x 4

Washbasins with basin mixer and *Corian* surface  
Vanity locker with mirror  
Towel hook, rail and ring  
Separate shower compartment with *Perspex* door  
with lever mixer and adjustable shower rose  
Shower sump with push-button drainage  
LED Overhead lighting  
Overhead roller blinds for privacy  
*PAR Brydon* large bowl manual toilet\*

### ENGINE & CONTROLS

*Morse* double lever throttle / gearshift control  
Sound deadening panels in engine room  
2 x Engine room ventilation fans and ducting  
2 x *Yanmar* 3JH5E 39 hp diesel engines\*  
2 x SD60 sail drives with 3-blade fixed propellers  
2 x Fuel deck fillers  
2 x *Yanmar* fuel filter / water separators  
2 x Fuel tanks (aluminium) Total capacity 185 gal / 700 L  
2 x Exhaust skin fittings (stainless steel)  
2 x Exhaust water locks  
2 x Cooling water inlet strainers  
2 x Exhaust cooling water temperature sensors with  
audible alarms at helm

### PLUMBING INSTALLATION

Hot and cold pressurized fresh water system:  
2 x Water tanks. Total capacity 206 gal / 780 L \*  
1 x *Jabsco Par Max* 3.5 GPM water pressure  
pump with 1 L *Jabsco* accumulator tank  
2 x Hot water tanks. Total capacity 22 gal / 100 L  
Transom shower (cold only)  
4 x Shower drain pumps with filters  
2 x Holding tanks. Total capacity 45 gal / 170 L  
2 x Electric bilge pumps (keel sump) with float switches  
and alarm at switch panel  
2 x Manual bilge pumps with strum boxes (keel sump)  
2 x High water bilge float switches with  
alarm at switch panel  
2 x Electric bilge pumps (engine room) with alarm  
at switch panel

### RUDDER & STEERING SYSTEM

Balanced spade rudders  
Rudder stock in F16ph (stainless steel)  
*JP3* Self aligning bearings  
*Edson* chain and wire steering system with bulkhead  
steering unit and brake  
Destroyer-type steering wheel (stainless steel)  
Emergency tiller (stainless steel)

### ELECTRICAL INSTALLATION

LED Courtesy lights at stairways  
Bi-colour & stern navlights  
12v DC switch panel  
2 x 12v outlet sockets at switch panel and helmstation  
2 x Fuel tank gauges at helm position  
2 x Ammeters at helm position  
2 x House batteries - 210 aH deep cycle lead acid type\*  
2 x Engine starter batteries - 100 aH lead acid type\*  
1 x House battery isolator switch  
2 x Engine starter battery isolator switches  
2 x Alternators, standard with engines  
1 x Electrical spares kit: fuses, relays, fuse holders  
1 x Electric fog horn with control at helm station

# The Moorings 4800 Crewed

## STANDARD BOAT EQUIPMENT LIST

### DECK FITTINGS

*Flexiteek* simulated teak decking on fwd and aft cockpit  
Guardwires with stanchions, bases, port & stb side gates (stainless steel)  
Guardwires across bow and stern  
1500w vertical windlass 10 mm chain gypsy with handheld windlass remote control  
Anchor bow roller fitting  
Anchor chain stopper  
Liferaft locker with convertible fore/aft seat bolster  
Sliding companionway door - 2 sections  
Hardtop over cockpit complete with LED lighting  
Hardtop bimini over helm with supports (stainless steel) and LED light  
Swimming ladder with teak steps  
Cockpit table  
Furler jammer on deck  
Bridle mainsheet system (3:1 purchase)  
Trampoline (white *Aquabatten Supertramp*)  
Helmseat  
Lifering holder  
Acrylic smoke grey tinted windows  
Hardtop supports (stainless steel)  
Side window brows  
Hatches - *Lewmar*:  
    4 x *Size 10 Flush Hatch* over heads  
    4 x *Size 44 Flush Hatch* over cabins  
    2 x *Size 60 Flush Hatch* on foredeck (vented)  
    1 x *Size 70 Flush Hatch* over cockpit  
Portlights - *Lewmar*:  
    2 x *Size 5* in windscreen  
    10 x *Size 1* in hull side and transom  
1 x Chain locker  
1 x Anchor/windlass locker  
2 x Foredeck lockers  
Forward lounging cockpit with hardtop with watertight saloon access door and sliding hatch for foredeck access  
1 x Forward cockpit locker  
2 x Seats with stowage locker under in fwd cockpit  
2 x Pulpits with seat  
2 x Pushpits  
2 x Coachroof stainless steel handrails  
7 x 330mm mooring cleats  
2 x *Lewmar* winch handles  
1 x *Lewmar 55EST* (alloy) electric halyard / sheet winch  
2 x transom handrails

### DECK FITTINGS ( continued )

1 x *Lewmar 55ST* (alloy) halyard / sheet winch  
1 x *Lewmar 55ST* (alloy) main sheet winch  
2 x *Lewmar* genoa cars with pin stop  
2 x *Lewmar* genoa tracks  
1 x Winch handle pocket at helm  
2 x *Spinlock* main halyard clutch at helm  
2 x *Spinlock* genoa halyard clutch at helm  
2 x *Spinlock* mainsheet clutch at helm  
2 x *Spinlock* reef clutch at helm  
1 x Clutch and cleat on mast for genoa halyard  
4 x Padeyes to allow for gennaker tackle  
Drinks holders  
    forward cockpit (4), helmstation (2), cockpit (1)

### NAVIGATION EQUIPMENT

Compass at helm position

### RUNNING RIGGING

2 x Main sheets (3:1 purchase)  
2 x Genoa sheets  
3 x Halyards (main, genoa & spare)  
2 x Single line reefs lead aft  
1 x Main boom topping lift

### MAST, RIGGING & SAILS

*Sparcraft* natural anodized mast with steps  
*Sparcraft* natural anodized crossbeam with cleats  
*Windex* wind indicator  
*Profurl* genoa furler  
*Ullman* Mainsail full battened with 2 rows reefs  
*Ullman* 120% Furling genoa  
2 x Additional spare 12 v wires in mast  
Additional conduit with messenger in mast

### GENERAL EQUIPMENT

6 x Fire extinguishers  
Owner's Operating Manual  
CE Certification  
NMMA Certification

# The Moorings 4800 Crewed

## EXTRA CHARTER YACHT EQUIPMENT LIST

### ELECTRICAL INSTALLATION

*Raymarine* Instrument Package: includes Ray55 VHF at navstation, p70 color autopilot display, C95 chartplotter with WiFi, i60 wind instrument & i50 Tridata speed, log & depth instrument with retract. depth & speed transducers.  
110v or 220 v hard wired shore power cord. Includes 1 heavy duty 30 amp shore power line, AC switch panel, AC double outlets in cabin, galley and at switch panel  
Fusion 700i Series Marine Stereo in saloon with docking station. Includes Bluetooth, USB, & AUX connectivity. Fusion Marine speakers in saloon (2) & aft cockpit (2). Wired remote control at helm station  
Battery Charger 60 amp  
AGM upgrade to House and Engine start from Lead Acid  
One additional AGM House Battery (210 aH)  
Ventilation fans in Saloon (3) and one in each stateroom  
*Northern Lights* 9 kw Genset + Battery and fittings  
*Cruisair* Air Conditioning (3) Total 40,000 BTU  
23" Flat Screen TV/DVD in Saloon Dual 110v/220v combo  
Solar Panels (2) 70w each fitted to hard top  
*Fusion* Marine Speakers (2) in Forward Cockpit

### DECK FITTINGS

Removable Helmseat spray dodger/windscreen  
Custom Davit System with electric winch (stainless steel)  
Coachroof side windows removable shade covers  
Cockpit side and back curtains  
Upholstered fixed Cockpit stools (stainless steel)

### PLUMBING INSTALLATION

Electric Flusing Toilets (4) in lieu of Standard  
Stern Shower: Hot and Cold in lieu of standard  
Extra Water Tank 58 gal / 220 L

### MAST, RIGGING & SAILS

Boom Cover Backpack System

### INTERIOR

STB Forepeak has berth, head, shower, basin, light & fan (Access from deck hatch only for crew or single guest)  
PORT Forepeak has single berth, light & fan with access from deck and port forward cabin  
Saloon table converts to a double berth with cushions & coffee table  
Microwave Oven in Galley

### GENERAL SPECIFICATIONS

Length Overall: 14.75 m / 48 ft 5 in  
Waterline Length: 13.85 m / 45 ft 5 in  
Mast Height: 22.60 m / 74 ft 2 in  
Beam: 7.64 m / 25 ft  
Draft: 1.40 m / 4 ft 7 in  
Displacement: 17 000 kg / 37 480 lbs  
Fuel Capacity: 700 L / 185 gal  
Water Capacity: 1000 L / 264 gal  
Sail Area: 144.5 sq m / 1,555 sq ft  
Engines: 2 x 54 hp

### ENGINE & CONTROLS

*Yanmar* 4JH4CE 54 hp Engines (2) in lieu of 39 hp

### COMMISSIONING

Transport Documentation and Commissioning:  
Transport to CT Harbor, launching, stepping of mast, installation of sails and rigging, commissioning of equipment and sea trials  
Antifouling Paint  
CE Certification

### DELIVERY

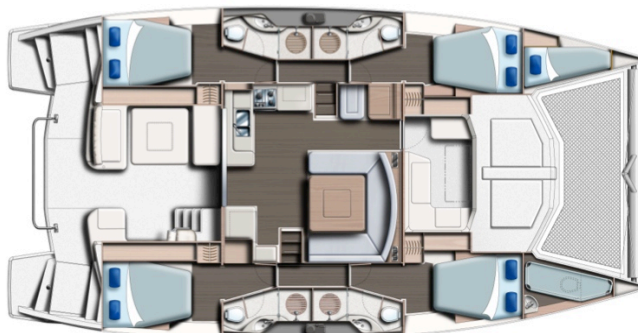
Delivery from Cape Town to Charter Port

### SAFETY GEAR

55 lbs (25 kg) Delta Anchor - 230 ft (70 m) of chain  
35 lbs (15 kg) Brittney Anchor - 26 ft (8 m) of chain & 200 ft (61 m) warp  
Anchor Bridle, shackles and hook  
Fenders (6)  
Mooring lines (4) 18 mm x 10 m  
Spring Lines (2) 18 mm x 15 m  
Life Jackets for twelve (12)  
Safety Harnesses  
Bell  
Flare Kit  
Binoculars  
Navigation tools: Parallel Rule, Compass, Dividers

### CRUISING GEAR

Upgraded glasses, dinnerware for twelve (12)  
Bed Linens for twelve (12)  
Flatware for twelve (12)  
Pots, Cooking & Serving utensils  
Upgraded appliances: Blender, Coffee maker, food processor, miscellaneous food prep  
Snorkeling Gear for twelve (12)  
Beach towels, towels, washcloths for twelve (12)  
12 ft rigid bottom inflatable with 25 hp outboard  
Waterskis, kneeboard, tube & life vests  
1 x 2 person kayak  
1 x SUP - Paddle boards and paddles  
Fishing equipment



*The Builder reserves the right to change or amend the contents of this document at any time without prior notification to any third party and no liability will be accepted for errors contained within the same.*